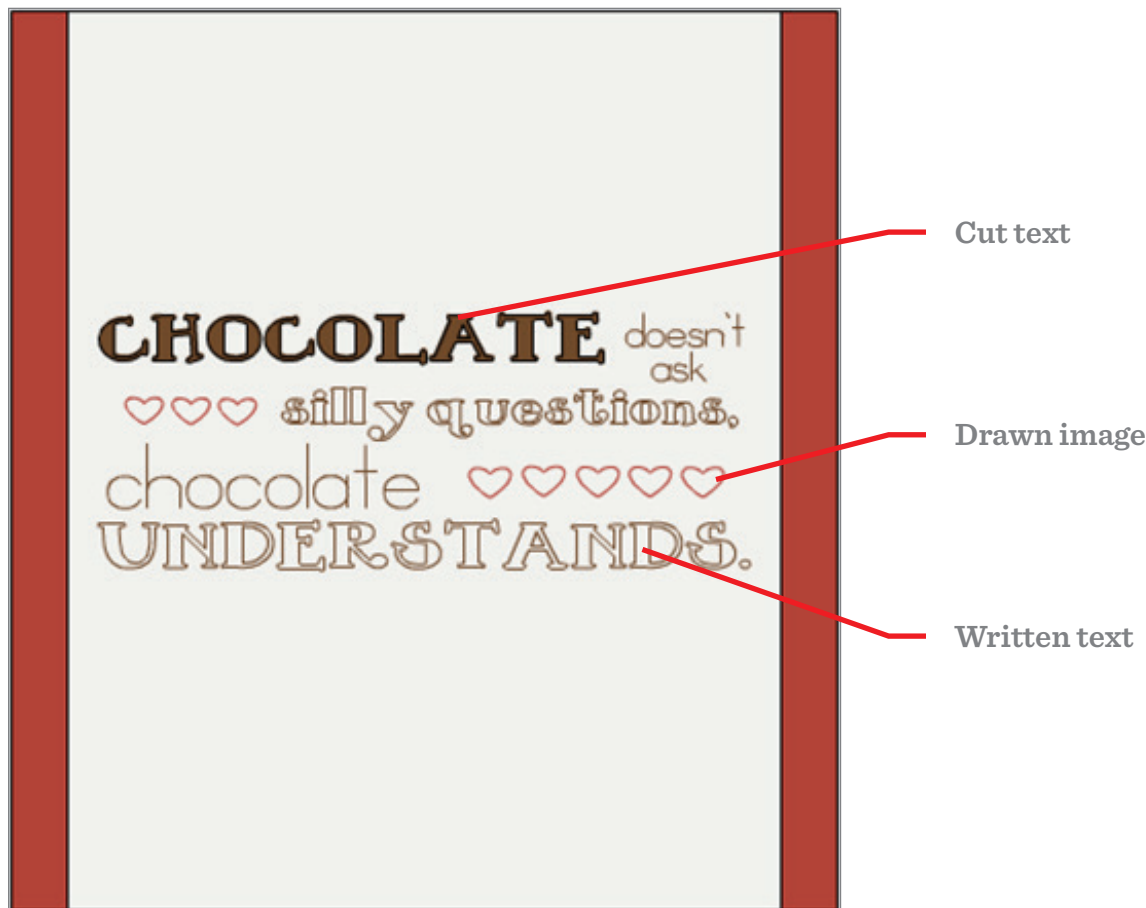


Attaching to hold write or score placement

The Attach feature can be used to fasten a write or score line to a cut layer. If there is more than one layer in a project, any write or score lines must be attached to another layer so that they will be written or scored on the correct mat.

Cricut® machines can write or draw on different materials. The candy wrapper in example 1 has text that is cut out, images that are drawn, and text that is written. Anything that is drawn or written needs to be attached to another layer.

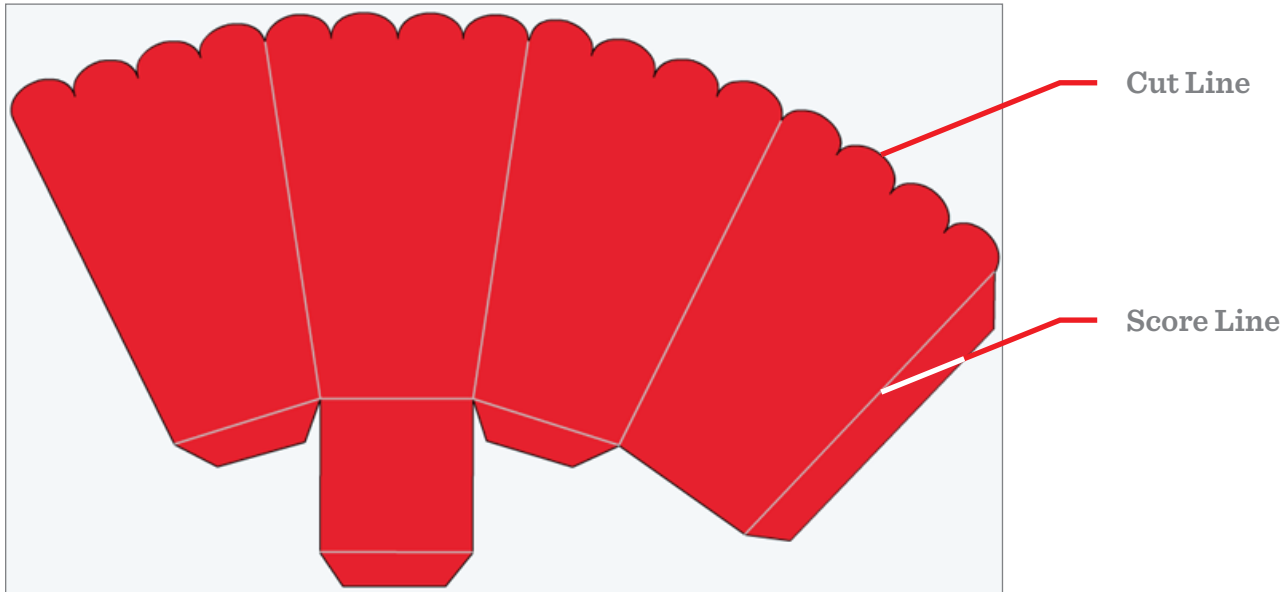
Example 1



Attaching to hold write or score placement

Cricut® machines can also add score lines to projects. The box in example 2 contains score lines. Any project that contains a score line must have the score line attached to another layer.

Example 2



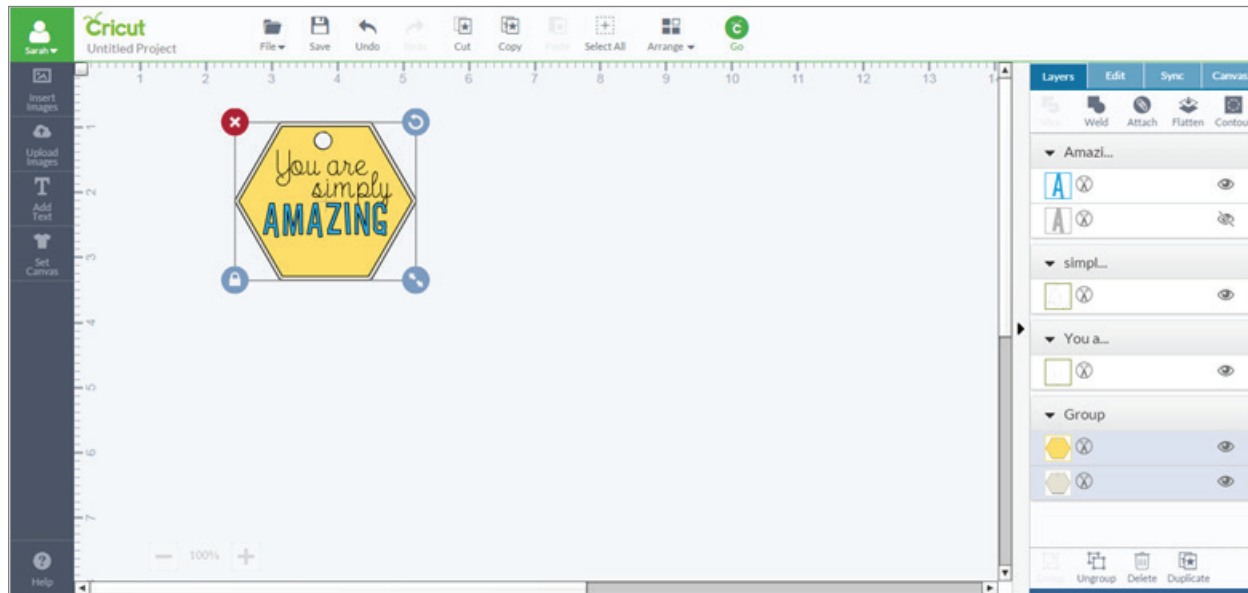
If items are not attached, Cricut Design Space will cut in paper saver mode, meaning it will automatically place objects on their own cutting mat as close together as possible to conserve material. In addition to fastening write or score lines to cut layers, attaching also holds your cuts in position so that images on the cutting mat are positioned exactly as they show up on the design screen.

Follow these steps to use the Attach tool to fasten a write or score line to a cut layer.

Attaching to hold write or score placement

Attaching a write or score line to a cut layer

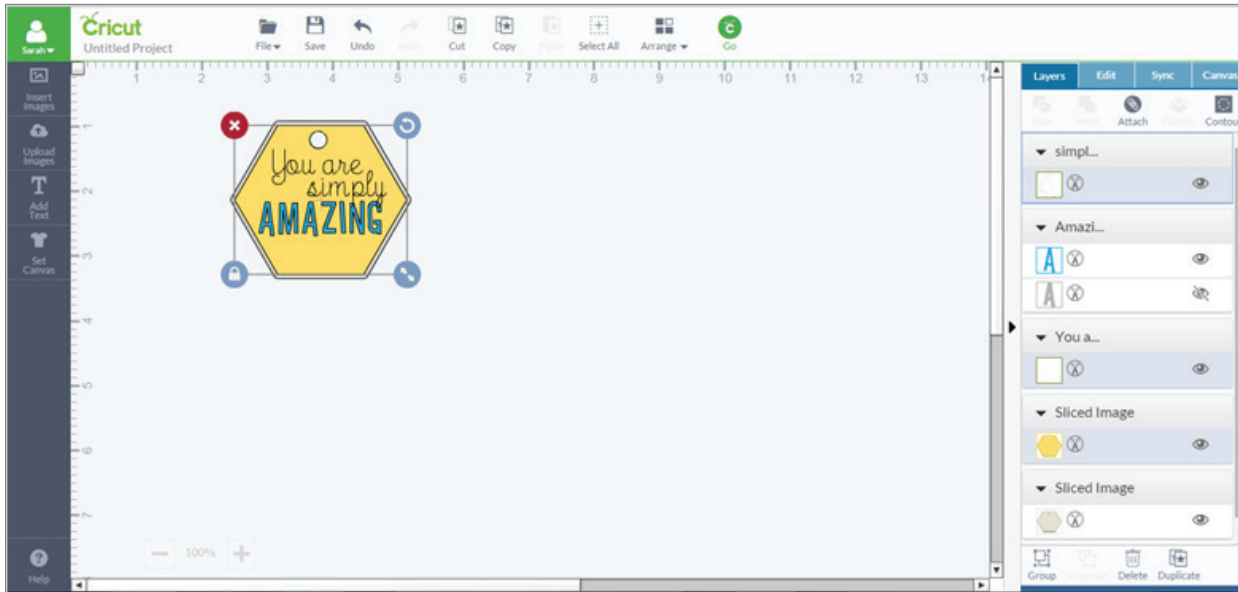
Step 1 Design your image as desired.



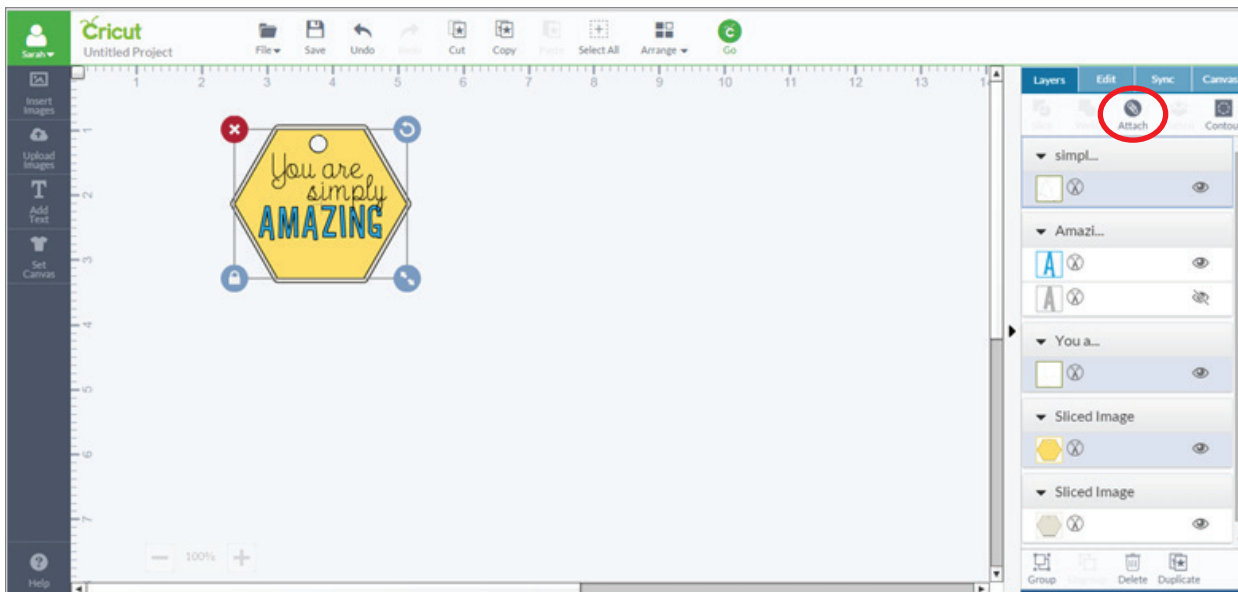
Tip: If you will be attaching a write or score line to a multi-layered image, ungroup the multi-layered image first to avoid attaching all the layers together. Text containing a write layer does not need to be ungrouped before attaching.

Attaching to hold write or score placement

Step 2 Select the draw, write, or score line and the layer you would like it placed on.

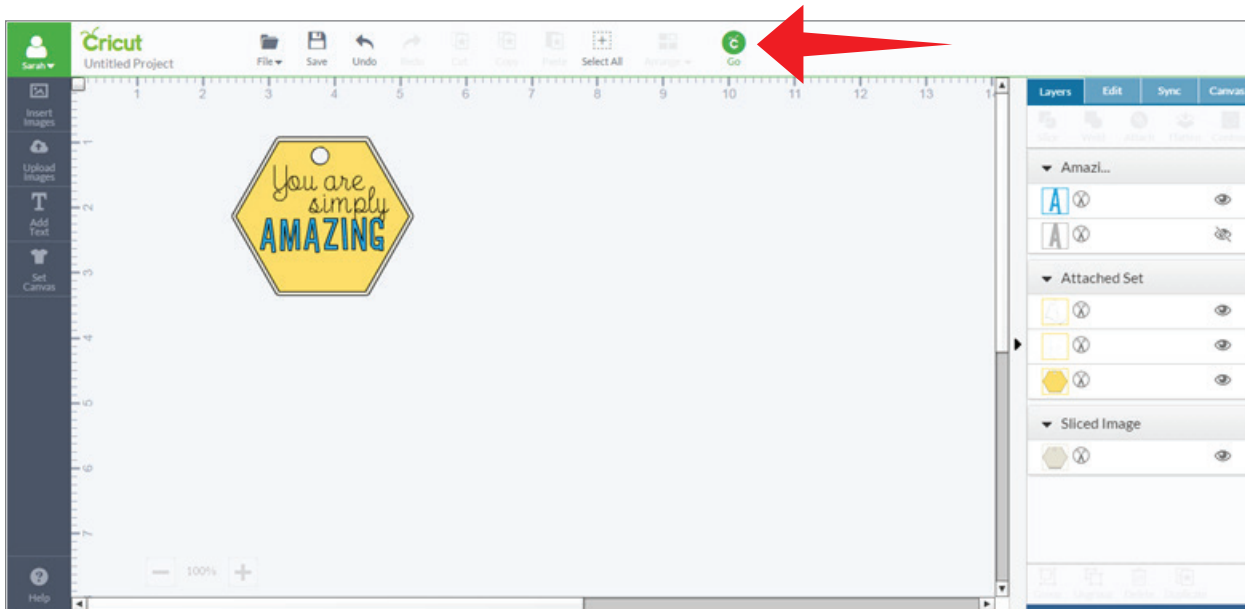


Step 3 Once images have been selected, click “Attach” on the Layers panel. Your text will be converted to an image and the text or your score line will be placed on the layer it has been attached to.

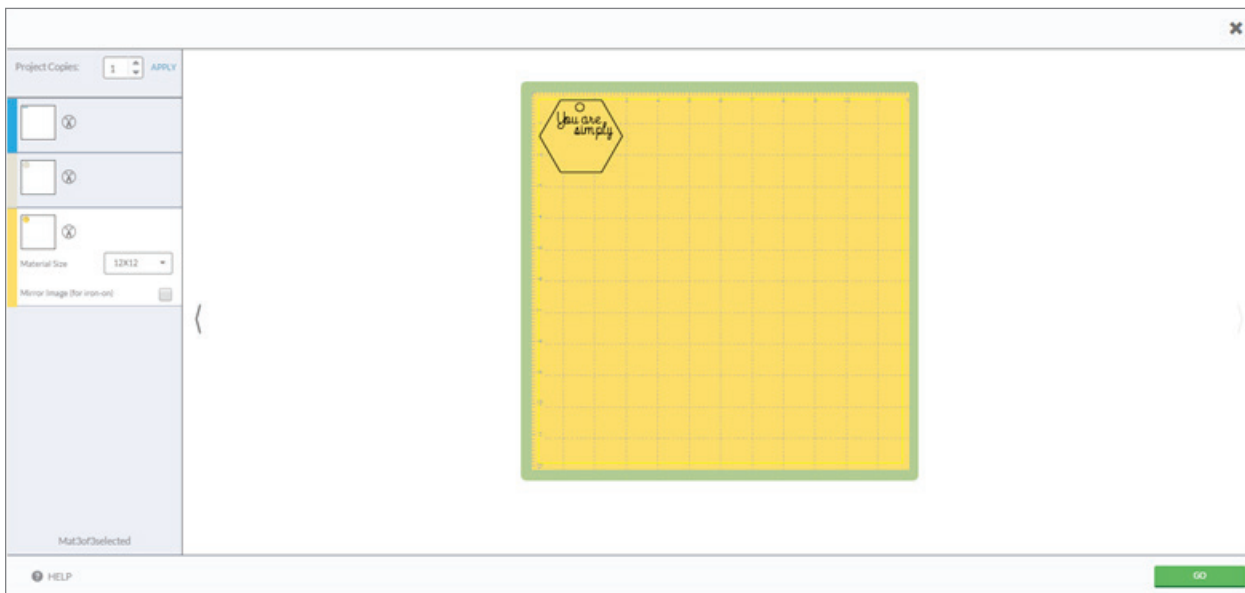


Attaching to hold write or score placement

Step 4 You will know that your images are attached because they will appear as an Attached Set on the layers panel. Click “Go” to begin the cutting process.



Step 5 The images will appear on the Mat preview screen exactly as you have them arranged on your project.



Tip: During the cutting process, you will be prompted to insert your pen or scoring stylus when necessary.